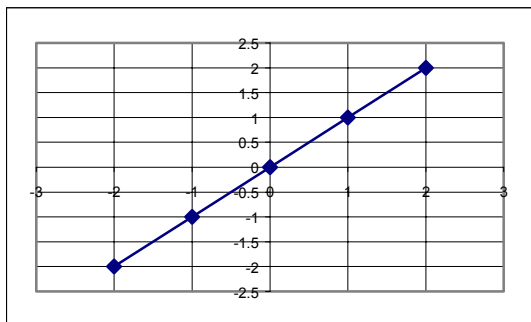


Algebra Applications

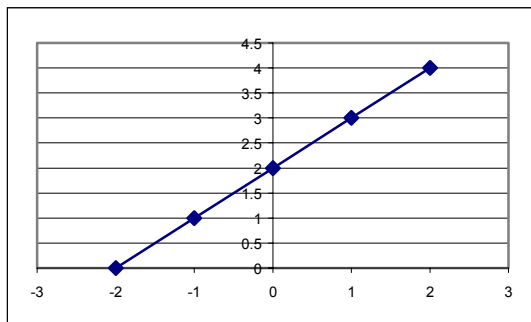
# Graphing Functions

Graph each equation using the points  $x = \{-2, -1, 0, 1, 2\}$

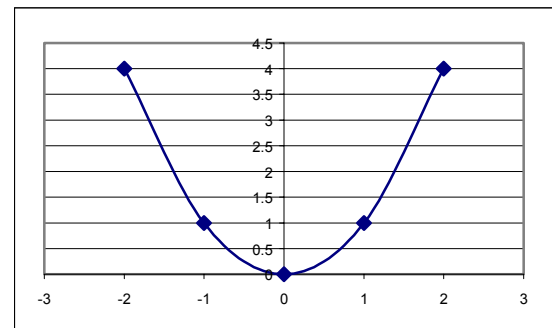
$f(x) = x$



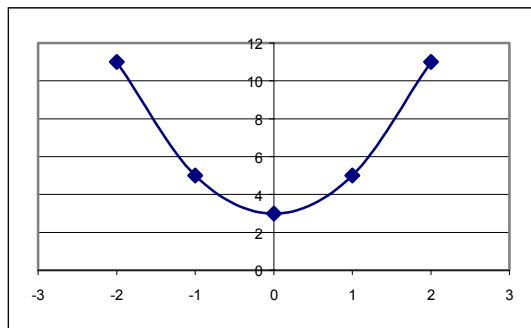
$f(x) = x + 2$



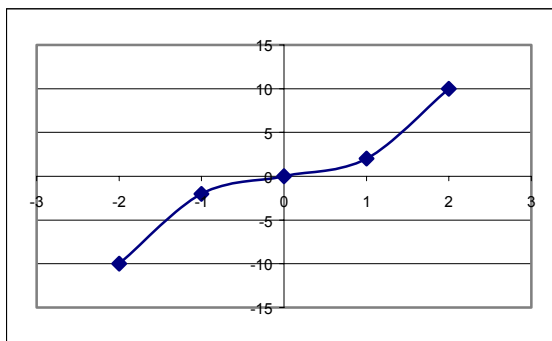
$f(x) = x^2$



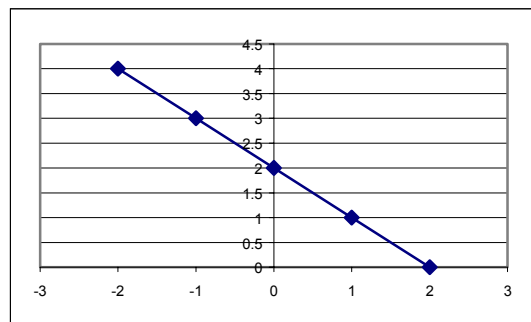
$f(x) = 2x^2 + 3$



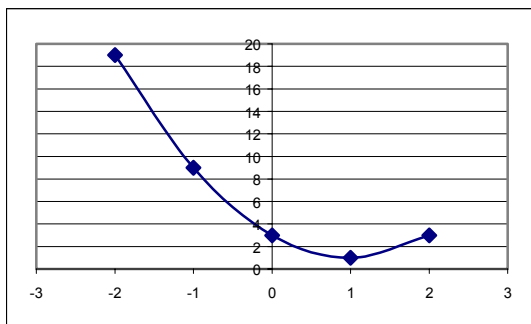
$f(x) = x^3 + x$



$f(x) = 2 - x$



$f(x) = 3 - 4x + 2x^2$



$f(x) = -x + 2 + x^2$

